

What wires are in the cable tray



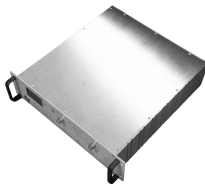
What wires are in the cable tray



Cable tray installed in a hazardous location must contain only those cables that are appropriate for this type of environment as defined in Chapter 5 of the NEC.



The cable management system's electromagnetic performance characterises its ability to protect its cables from external electromagnetic disturbance; if this is controlled, the data carried by the cables ...



In industrial setups, single insulated conductors can be used in cable trays if they are 1/0 AWG or larger. Cable trays can also be used to transition conductors into equipment through bushed ...



Since wiring in cable trays is considered a fixed or permanent wiring method by both OSHA and the NEC, flexible cords are prohibited from being used in cable trays (see NEC Article 400.4 for a list of ...

LoRa handheld portable base station



Complete guide to tray cable types including TC, TC-ER, VNTC, EPR-CPE, and shielded instrumentation cable. Compare constructions, NEC requirements, and applications for industrial, ...



Typical 300 volt insulated multiconductor instrumentation tray cables (ITC) and power limited tray cables (PLTC) cost the same for both cable tray and conduit wiring systems.



Tray cables (TC) are multi-conductor cables designed and rated for installation in cable trays and raceways or supported by messenger wires. Unlike standard electrical cables, tray cables feature ...



To that end this Bulletin is intended to discuss the types of cables most frequently used in cable trays and the wiring methods permitted in cable trays under the National Electric Code (NEC) NFPA 70.



In the electrical wiring of buildings, a cable tray system is used to support insulated electrical cables used for power distribution, control, and communication.



NEC Article 392 explains cable trays, their components, appropriate wiring methods for cable trays, and instances where they are and are not permitted for use. It also focuses on ...



The short answer is no. Due to their exposure to the open air because of the cable trays, the wires contained within need a very durable outer covering. The regulations dictate that the cables ...

Contact Us

For more information, pricing, or custom energy solutions, please contact us:

Website: <https://gdroofing.co.za>

Email: sales@gdroofing.co.za

Phone: +27 72 418 9365

Address: 22 Electron Avenue, Isando, Johannesburg, 1600, South Africa

This document is for informational purposes only. Specifications subject to change without notice.

