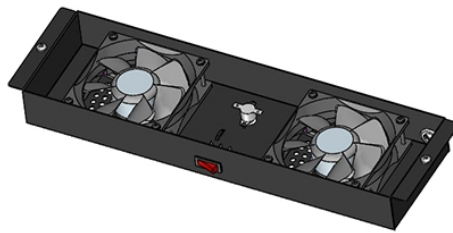


Which Bolivian MPO connector is the best-selling model



Overview

The MPO-PLUS® connector is the pinnacle of multi-fiber development, representing the most precise, feature-rich MPO connector on the market. SENKO is leading the way in low-loss MPO ferrules that exceed the standard and deliver the maximum amount of network agility and link performance to deliver. As traffic surges to 100G, 400G, and even 800G, single-fiber connectors like LC or SC struggle to keep up with density requirements. Imagine managing thousands of single-core jumpers in one row, it quickly turns into a spaghetti nightmare. Enter the MPO (Multi-Fiber Push-On) connector. Compact. Among high-density fiber connection solutions, MTP/MPO series cables are widely used in modern networks. Each one is good for different network jobs.

Which Bolivian MPO connector is the best-selling model



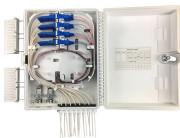
Enter the MPO (Multi-Fiber Push-On) connector. Compact, high-density, and standardized, MPO brings order to chaos by consolidating many fibers into a single plug.



Multifiber push-on (MPO) connectors—also commonly called MTP connectors, as MTP is a brand of MPO-style connector trademarked by US Conec—are increasingly popular because they provide ...



They use the industry-standard MPO connector, with adapters and breakouts to other connector types available, to help improve design flexibility. The connectors incorporate up to 48 fibers into a compact ...



New VSFF 16-fiber MPO connectors are nearly one-third the size of traditional 16-fiber MPO connectors. They offer improved density in high-performance computing MPO connector structures.



SENKO's MPO-PLUS® connector has the lowest insertion loss on the market thanks to its precision ferrules and superior guide-pin alignment. This enhanced performance gives network operators ...



Compare 8, 12, 16, and 24 fiber MPO Connectors to understand differences in fiber count, compatibility, and how each type fits your network's needs.



This article will take a deep look at the three main types of MTP/MPO connectors - Base-8, Base-12, Base-16, and Base-24, emphasizing their unique features and advantages, and also ...



Enter the MPO (Multi-Fiber Push-On) connector. Compact, high-density, and standardized, MPO brings order to chaos by consolidating many ...



Multifiber push-on (MPO) connectors—also commonly called MTP connectors, as MTP is a brand of MPO-style connector trademarked by US Conec—are ...



As a professional fiber optic manufacturer, FiberLife understands the various challenges customers face when selecting MPO connectors. To help users solve this problem, we have ...



Learn about the advantages of MTP Connector and how this MPO connector delivers exceptional value for a vast range of network technologies.



Of the current 400 Gb/s transceivers that use MPO connections, single-mode 400G-DR4 and multimode 400G-SR4.2 will likely become the most common over the next several years. 400G-DR4 uses four ...

Contact Us

For more information, pricing, or custom energy solutions, please contact us:

Website: <https://gdroofing.co.za>

Email: sales@gdroofing.co.za

Phone: +27 72 418 9365

Address: 22 Electron Avenue, Isando, Johannesburg, 1600, South Africa

This document is for informational purposes only. Specifications subject to change without notice.

