

## Will removing the light module trigger an alarm



### Overview

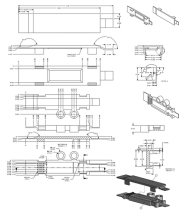
If the security module activates the siren, the turn signal lamps will alternately flash. If the siren has been armed and a security event occurs, and the siren is in self-driven mode, the siren will alarm for 20-30 seconds and then turn off for 5-10 seconds. To turn off a motion sensor light without a switch, you can cover the sensor temporarily with opaque material like cardboard or cloth. These can sometimes cause an electrical surge triggering the immobilizer system. How Does it Work?

Car alarms are designed. Many aftermarket alarms include a “Valet” switch, which is a small toggle or push-button installed in a discreet location, such as beneath the dash or inside the center console storage area. Just know you will no longer have the safety system of the neutral safety switch and the clutch safety switch.

## Will removing the light module trigger an alarm



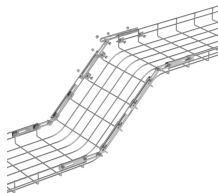
Step-by-step guide to removing complex aftermarket car alarms and correctly restoring critical vehicle electrical systems.



This is how to eliminate the Security System from your Harley Twin Cam 1999 to 2010. Just know you will no longer have the safety system of the neutral safety switch and the clutch safety switch....



Start by removing the battery's negative cable and leave it disconnected for five minutes then reconnect the battery. This will allow the security system to perform a hard reboot and reset the alarm protocol ...



As noted in TruckGuider resources, identifying the correct color codes (e.g., White with Pink stripe for reverse, White with Yellow for turn signals) is essential to ensure no short circuits are ...



Would this trip the motion detector in Vista P20 alarm motion detectors? I tried it and it seems to not be doing that, but I'm not sure if it will always not trigger the alarm.



Aftermarket alarm systems require tapping into the factory electrical system to trigger the alarm when the dome lamp illuminates or a door is opened. They also use the battery connections to ...



Step-by-step guide to removing complex aftermarket car alarms and correctly restoring critical vehicle electrical systems.



With an Arduino board and a flame sensor, you can create projects that detect flames and trigger alerts, such as activating a buzzer, sending notifications, or controlling other devices like ...



We've recently moved into a house with a wired house alarm that appears to be wired to the upstairs lighting circuit. Any time a light bulb blows its trips the fuse and sets off the house alarm. ...



If the security module activates the siren, the turn signal lamps will alternately flash. If the siren has been armed and a security event occurs, and the siren is in self-driven mode, the siren will alarm for 20-30 ...



If your light has a wireless sensor, simply unplug it or remove any batteries. For those wishing to revert to just a switch-controlled light, disconnecting the motion sensor will restore ...

## Contact Us

For more information, pricing, or custom energy solutions, please contact us:

Website: <https://gdroofing.co.za>

Email: [sales@gdroofing.co.za](mailto:sales@gdroofing.co.za)

Phone: +27 72 418 9365

Address: 22 Electron Avenue, Isando, Johannesburg, 1600, South Africa

This document is for informational purposes only. Specifications subject to change without notice.

