

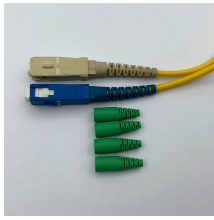
# Will the indicator light turn on if the OLT pigtail is plugged in backwards



## Overview

This was most likely a problem with the electrical connection at the point where the pigtail is plugged into the power box. I've seen a poorly grounded plug cause this. If it's the tow vehicle, same fix just in the trailer connector. If the power supply is normally connected, the POWER indicator still does not light up, we recommend that you try replacing the ONU with a new one. After unplugging the pigtail, the situation remained unchanged: the left signal works when the lights are on, while the right one freezes, and the. When the turn signals break or have a bad connection other drivers are left guessing at what you will do. Either way, this is one of the sources for why your turn signal does not work.

## Will the indicator light turn on if the OLT pigtail is plugged in backw



OLT connected to the local equipment, if the optical signal is too strong (sometimes because of the short distance optical signal loss is small) need to add an attenuator.



Whether you are dealing with a faulty brake light or a malfunctioning trailer connection, this guide will equip you with the knowledge and skills needed to pinpoint and fix the problem.



Learn how to wire a semi trailer pigtail with a detailed diagram and step-by-step instructions.



Interestingly enough, when the driver changed lanes and used his turn signals, the turn signal lights on the sides of his trailer worked but not the ones on the back. This was most likely a problem with the ...



Once the collar successfully engages, the indicator switch on the vacuum motor will relay to your 4WD light in the cab, to turn on. Success! Now we somewhat sorta know how this works!



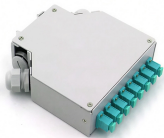
If your trailer is equipped with reverse lights, the backup lights should illuminate when you energize the circuit. If you wired an accessory up to this pin, that accessory should turn on when the circuit is ...



After unplugging the pigtail, the situation remained unchanged: the left signal works when the lights are on, while the right one freezes, and the turn signal light on the right stays lit but does not flash.



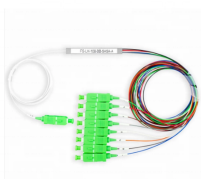
After unplugging the pigtail, the situation remained unchanged: the left signal works when the lights are on, while the right one freezes, and the turn signal light on the right stays lit but does not flash.



TEL indicator is also called voice phone indicator, which indicates the connection status of ONU and telephone at the local end. Description: This indicator is only available on the front side of ...



If this is the mistake that's made, your running lights will be on all the time, your blinkers will be switched, you won't have constant 12v to charge your batteries, and your trailer brakes will not ...



If the new trailer's lights work when connected to your vehicle, then the problem should lie on your trailer's side of the connection. If using different vehicles and trailers is not an option, then ...



**Check Indicator Lights** The first step is checking the indicator LEDs on the OLT's front panel or management interfaces. These give an overview of the operating status: Power LEDs ...

## Contact Us

For more information, pricing, or custom energy solutions, please contact us:

Website: <https://gdroofing.co.za>

Email: [sales@gdroofing.co.za](mailto:sales@gdroofing.co.za)

Phone: +27 72 418 9365

Address: 22 Electron Avenue, Isando, Johannesburg, 1600, South Africa

This document is for informational purposes only. Specifications subject to change without notice.

