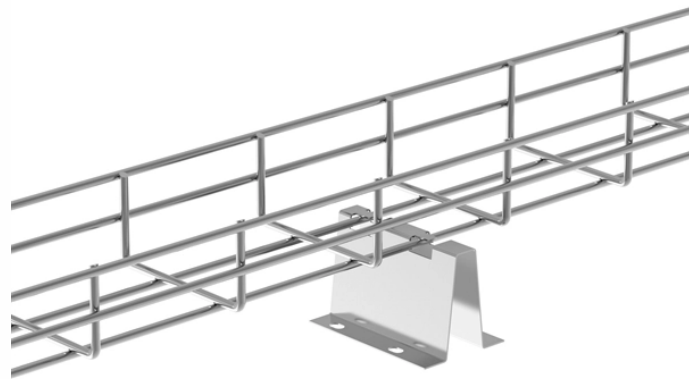


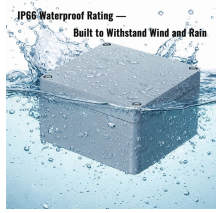
## Wiring distance of charging pile distribution box



### Overview

It is recommended to install it near the power distribution room. A distance of at least 1 meter should be left in front and behind the charging pile to ensure sufficient ventilation. Anti-collision barriers are installed on motor. Our integrated circuits and reference designs help you create smarter and safer AC charging (pile) stations that provide energy to electric vehicles (EVs). Flat concrete base with vertical gradient not more than. This specification covers technical requirements of design, manufacture, testing at manufacturer's works, packing, forwarding, supply and unloading at store/site and performance of pillar box with all accessories for trouble free and efficient operation. Wiring Direction: Wiring between the main circuit breaker and each branch circuit breaker in the box generally. To add the following enhancements to your purchase, choose a different seller. We work hard to protect your security and privacy. Our payment security system encrypts your information during transmission.

## Wiring distance of charging pile distribution box



This charging system contains both AC and DC high voltage circuitry and devices and should only be installed by a qualified electrician trained to work on high voltage, high current AC and DC systems.



Wiring Direction: Wiring between the main circuit breaker and each branch circuit breaker in the box generally goes on the left, and the wiring out of ...



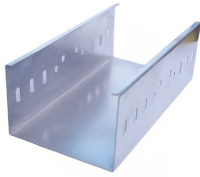
It can work safely indoors and outdoors (with a rain-proof shed). Application: Residential charging and commercial charging. The product integrates charging control and guidance, human-computer ...



View the TI AC charging (pile) station block diagram, product recommendations, reference designs and start designing.



In accordance with the Code of Practice for the Electricity (Wiring) Regulations, the following interfacing requirements shall be fulfilled for phase identification purpose.



The minimum approach distance chart defines safe working distances to prevent arc flash injuries. Based on NFPA 70E and OSHA standards, it helps protect electrical workers by ...



It is recommended to install it near the power distribution room. A distance of at least 1 meter should be left in front and behind the charging pile to ensure sufficient ventilation.



DIYEAH 3pcs Charging Pile Distribution Box Outdoor Enclosure Window Circuit Breaker Protection Power Supply Junction Box Din Rail Wiring - Amazon About this item Compact structure: the ...



During charging, try to avoid coiling or winding the gun cable, and minimize friction between the cable and the ground to prevent damage to the outer insulation.



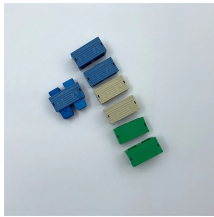
NEC 300.5 is an article in the National Electrical Code that addresses requirements for underground electrical installations, including minimum cover ...



The Pillar box shall be provided with an Aluminium Earth bus at the bottom, suitable for the rated short time current of the pillar. The earth bus shall provide Earthing to all the components inside the pillar ...



Charging pile inlet cable with a minimum of 3\*6 square meters, the length should not exceed 60 meters, and for more than 60 meters, please use 10 square cables.



Input AC Power Distribution: First open the front door of the charging pile, then three-phase five-wire AC power supply (400VAC) need to be connected successively according to the ...

## Contact Us

For more information, pricing, or custom energy solutions, please contact us:

Website: <https://gdroofing.co.za>

Email: [sales@gdroofing.co.za](mailto:sales@gdroofing.co.za)

Phone: +27 72 418 9365

Address: 22 Electron Avenue, Isando, Johannesburg, 1600, South Africa

This document is for informational purposes only. Specifications subject to change without notice.

