

# Wiring of auxiliary distribution box



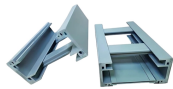
## Overview

A 3-conductor approach is standard for distributing electricity to an auxiliary system, where only three connections are needed—two hot lines and one neutral. These setups typically provide 240V for most applications, but it's crucial to follow the proper configuration to prevent. The installer tied the blunt cut wire in the Passenger kick panel to the box; so now I can wire the Large Aux switch and the three Auxiliary switches directly under the hood. I've talked to three dealers so far and none have any information on where to get the wiring adapter connection that comes. Learn how to wire a distribution box step by step! This video shows real on-site footage of electrical installation, demonstrating safe and standardized wiring methods used by professionals. Vehicles equipped with PTO Prep will have 5 Aux Switches and a PTO Switch. These switches are integrated into the vehicle electrical architecture and communicate over a LIN bus to the vehicle.

## Wiring of auxiliary distribution box



Learn how to wire a distribution box step by step! This video shows real on-site footage of electrical installation, demonstrating safe and standardized wiring methods used by professionals.



Here's a quick guide on how I successfully retrofitted and installed the GM Upfitter auxiliary fuse/relay block and the 5 bank switches in my 23 Colorado...



See the Upfitter Schematic for detailed instructions. Connections to the auxiliary switch controlled outputs are located in two 4-way connectors mounted on the side of the Auxiliary Power Distribution ...



A detailed guide to understanding the auxiliary fuse box wiring diagram, covering key components, wiring connections, and setup for various vehicles.



Learn how to install a distribution box safely and correctly. Covers wiring, placement, standards, and expert tips for a compliant setup.



Had the dealer install the Auxiliary Switches and the Accessory Power Distribution Box. The installer tied the blunt cut wire in the Passenger kick panel to the box; so now I can wire the ...



Learn how to wire a 3-wire sub panel with this clear and detailed diagram. Step-by-step instructions for safe and reliable electrical installation.



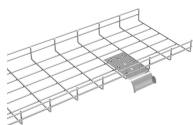
Had the dealer install the Auxiliary Switches and the Accessory Power Distribution Box. The installer tied the blunt cut wire in the Passenger kick panel ...



Wiring Direction: Wiring between the main circuit breaker and each branch circuit breaker in the box generally goes on the left, and the wiring out of the distribution box generally goes on the ...



This article provides a step-by-step wiring guide to help you install an auxiliary fuse box in your vehicle.



We recommend setting up your auxiliary power system as your first step in any overland/expedition build. Begin by mapping out all of the planned accessories you intend to include for your ideal ...



We recommend setting up your auxiliary power system as your first step in any overland/expedition build. Begin by mapping out all of the planned accessories ...

## Contact Us

For more information, pricing, or custom energy solutions, please contact us:

Website: <https://gdroofing.co.za>

Email: [sales@gdroofing.co.za](mailto:sales@gdroofing.co.za)

Phone: +27 72 418 9365

Address: 22 Electron Avenue, Isando, Johannesburg, 1600, South Africa

This document is for informational purposes only. Specifications subject to change without notice.

