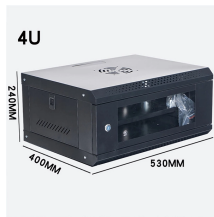


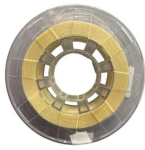
# **Xgn2-12 Small busbar connector model**



## Xgn2-12 Small busbar connector model



XGN2-12 switchgear is a fixed type AC metal-enclosed switchgear used for 3.6kV - 12kV medium voltage power distribution systems.



The XGN2-12 box-type fixed metal-enclosed switchgear features a cabinet frame constructed from welded angle steel. The interior compartments include the circuit breaker chamber, ...



Description XGN2-12 box- type fixed AC metal-enclosed switchgear is suitable for three-phase AC single bus with rated voltage of 3.6-12kV, 50Hz, rated current of 630A-3150A, double bus, single bus with ...



XGN2-12 Tank-type (fixed) AC H.V. Metal-enclosed switchgear (short for switchgear) is suitable for 3.6, 7.2 12KV, 50HZb three-Phase AC system, used as electric energy acceptance and distribution.



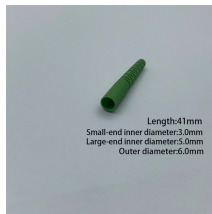
XGN2-12 (Z) AC Metal-Enclosed Switchgear is used in 3.6, 7.2, ...



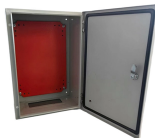
XGN2-12 series is metal enclosed fixed switchgear, the body is welded with angle steel and steel board, inner and outer coating is solid by static spray plastic powder.



XGN2-12 (Z) AC Metal-Enclosed Switchgear is used in 3.6, 7.2, 12kV three-phase AC 50Hz systems to receive and distribute electric energy. It is especially suitable for frequent operations.



XGN2-12 box type fixed metal enclosed switch set (referred to as "switching device"), suitable for rated voltage 3.6~12kV, 50Hz, rated current 630A~3150A three-phase AC single bus, double busbar, ...



Remove the rear cover plate to install the main busbar and primary power supply, the contact surface of the terminals should be cleaned and coated with neutral petroleum jelly, seal the cable holes after ...



Product introduction XGN2-12 box-type fixed metal-enclosed switchgear (hereinafter referred to as the switchgear) is used for power acceptance and distribution of 50Hz three-phase AC system of 12KV ...



XGN2-12Q (Z) Box-Type Fixed Indoor AC Metal-Enclosed Switchgears Suitable for 3.6~12kV three-phase AC, 50Hz single busbar, single busbar sectioned, and single busbar bypass systems.

## Contact Us

For more information, pricing, or custom energy solutions, please contact us:

Website: <https://gdroofing.co.za>

Email: [sales@gdroofing.co.za](mailto:sales@gdroofing.co.za)

Phone: +27 72 418 9365

Address: 22 Electron Avenue, Isando, Johannesburg, 1600, South Africa

This document is for informational purposes only. Specifications subject to change without notice.

